



**REGIONAL SPECIALISED METEOROLOGICAL CENTRE-TROPICAL CYCLONES, NEW DELHI
TROPICAL WEATHER OUTLOOK**

DEMS-RSMC TROPICAL CYCLONES NEW DELHI DATED 21.09.2024

TROPICAL WEATHER OUTLOOK FOR NORTH INDIAN OCEAN (THE BAY OF BENGAL AND THE ARABIAN SEA) VALID FOR NEXT 168 HOURS ISSUED AT 0600 UTC OF 21.09.2024 BASED ON 0300 UTC OF 21.09.2024.

BAY OF BENGAL:

EMBEDDED WITH AN EAST-WEST SHEAR ZONE, YESTERDAY'S UPPER AIR CYCLONIC CIRCULATION OVER WESTCENTRAL BAY OF BENGAL & ADJOINING SOUTHWEST BAY OF BENGAL LAY OVER WESTCENTRAL BAY OF BENGAL EXTENDING UPTO MID TROPOSPHERIC LEVELS. ANOTHER UPPER AIR CYCLONIC CIRCULATION LAY OVER NORTHERN PARTS OF THAILAND & NEIGHBOURHOOD AT 0300 UTC OF TODAY, THE 21ST SEPTEMBER, 2024 EXTENDING UPTO MID TROPOSPHERIC LEVELS. THE UPPER AIR CYCLONIC CIRCULATION STATED LATTER IS LIKELY TO MOVE WEST-NORTHWESTWARDS.

UNDER THE INFLUENCE OF THESE TWO UPPER AIR CYCLONIC CIRCULATIONS, A LOW-PRESSURE AREA IS LIKELY TO FORM OVER NORTHWEST & ADJOINING WESTCENTRAL BAY OF BENGAL AROUND 23RD SEPTEMBER 2024.

SCATTERED LOW AND MEDIUM CLOUDS WITH EMBEDDED INTENSE TO VERY INTENSE CONVECTION LAY OVER BAY OF BENGAL, ANDAMAN SEA, GULF OF MARTABAN & TENASSERIM COAST. MINIMUM CLOUD TOP TEMPERATURE IS MINUS 70 TO 90 DEGREE CELSIUS.

***PROBABILITY OF CYCLOGENESIS (FORMATION OF DEPRESSION) DURING NEXT 168 HRS:**

24 HOURS	24-48 HOURS	48-72 HOURS	72-96 HOURS	96-120 HOURS	120-144 HOURS	144-168 HOURS
NIL	NIL	LOW	LOW	-	-	NIL

***NOTE: EVERY 24HR FORECAST IS VALID UPTO 0300 UTC (0830 IST) OF NEXT DAY**

ARABIAN SEA:

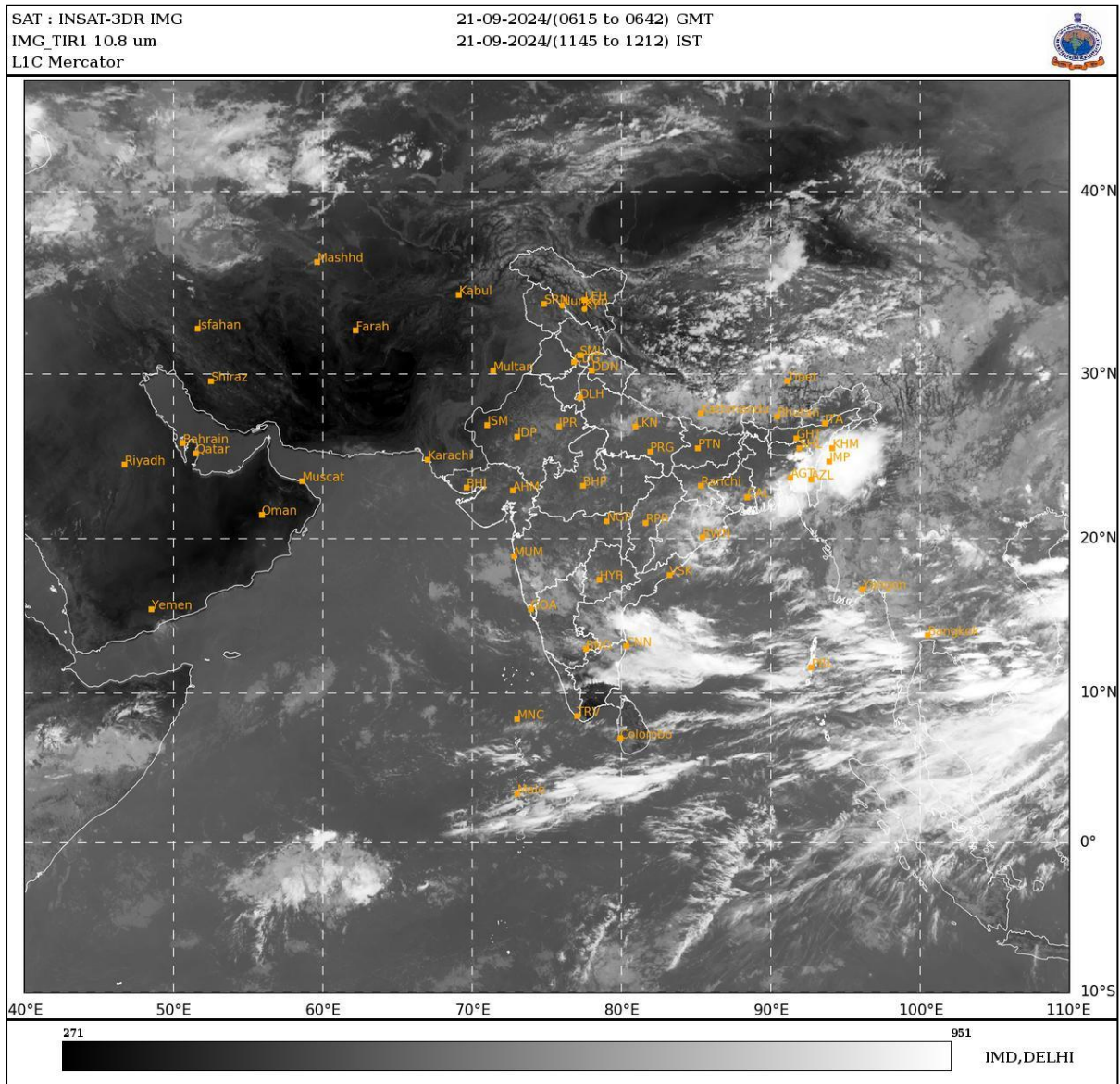
SCATTERED LOW AND MEDIUM CLOUDS WITH EMBEDDED ISOLATED WEAK TO MODERATE CONVECTION LAY OVER EASTCENTRAL & SOUTH ARABIAN SEA, LAKSHADWEEP ISLANDS AREA, MALDIVES AND COMORIN AREA.

***PROBABILITY OF CYCLOGENESIS (FORMATION OF DEPRESSION) DURING NEXT 168 HRS:**

24 HOURS	24-48 HOURS	48-72 HOURS	72-96 HOURS	96-120 HOURS	120-144 HOURS	144-168 HOURS
NIL	NIL	NIL	NIL	NIL	NIL	NIL

***NOTE: EVERY 24HR FORECAST IS VALID UPTO 0300 UTC (0830 IST) OF NEXT DAY**

REMARKS: NIL



Cloud distribution: (a) Isolated: <25%, Scattered:25-50%, Broken: 51-75%, Solid:>75%, Convection Intensity: (a) Weak: Cloud Top Temperature (CTT) >-25°C, (b) Moderate: CTT: - 25°C to -40°C, (c) Intense: CTT: - 41°C to -70°C and (d) Very Intense: : Less than -70°C
PROBABILITY OF CYCLOGENESIS (FORMATION OF DEPRESSION):NIL: 0%, LOW: 1-33%, , MODERATE: 34-66% AND HIGH: 67-100%
This is a guidance Bulletin for WMO/ESCAP Panel Member countries. Visit respective National websites for Country specific Bulletins